

Pairing HomeMatic BidCoS Devices

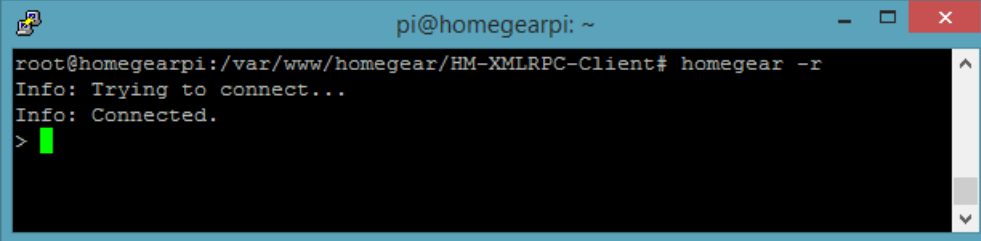
From Homegear

Pair a Device Using Homegear's Command Line Interface

- First log in into your Homegear system as root.
- Then connect to Homegear by executing:

```
homegear -r
```

- Now you should be connected to Homegear:

A screenshot of a terminal window titled 'pi@homegearpi: ~'. The prompt is 'root@homegearpi:/var/www/homegear/HM-XMLRPC-Client#'. The user has entered 'homegear -r'. The terminal output shows 'Info: Trying to connect...' followed by 'Info: Connected.' and a green cursor on a new line.

```
pi@homegearpi: ~
root@homegearpi:/var/www/homegear/HM-XMLRPC-Client# homegear -r
Info: Trying to connect...
Info: Connected.
>
```

- Select the device family "HomeMatic BidCoS" by executing:

```
families select 0
```

- Then select your central device:

```
devices select central
```

- Enable the pairing mode for 60 seconds:

```
pairing on
```

- Now enable pairing mode on your HomeMatic device.
- To see if your device was successfully paired, use:

```
peers list
```

- When the device shows up in the list the pairing was successful. If not, repeat the procedure. If it still doesn't work, reset the device to factory defaults and try again.
- When "peers list" shows "Config pending: Yes" 30 seconds after pairing, enable pairing mode again on your device to transmit the pending config.

```

sathya@homegear: ~
root@homegear:/home/sathya# homegear -r
Info: Trying to connect...
Info: Connected.
> families select 0
Device family "HomeMatic BidCoS" selected.
For information about the family's commands type: "help"
> devices select central
Device selected.
For information about the device's commands type: "help"
> peers list
ID:      124  Address: 0x1A71C1      Serial number: JEQ0206595      Device type: 0x0068 (HM-LC-Dim1TPBU-FM)
ID:      117  Address: 0x227C4E      Serial number: KEQ0436840      Device type: 0x00a0 (HM-RC-4-2)
ID:      116  Address: 0x1DA44D      Serial number: JEQ0554309      Device type: 0x003a (HM-CC-VD)
ID:       96  Address: 0x1C296F      Serial number: JEQ0351464      Device type: 0x0042 (HM-Sec-SD)
ID:       95  Address: 0x1C4D33      Serial number: JEQ0312388      Device type: 0x003a (HM-CC-VD)
ID:       93  Address: 0x1AEDE4      Serial number: JEQ0093282      Device type: 0x0069 (HM-LC-Sw1PBU-FM)
ID:       92  Address: 0x1D19F6      Serial number: JEQ0174658      Device type: 0x0042 (HM-Sec-SD)

```

Pair a Device Using the HomeMatic Configuration Tool

Homegear is compatible to the HomeMatic XML RPC interface. That is why you can use any software which supports this interface to connect to Homegear.

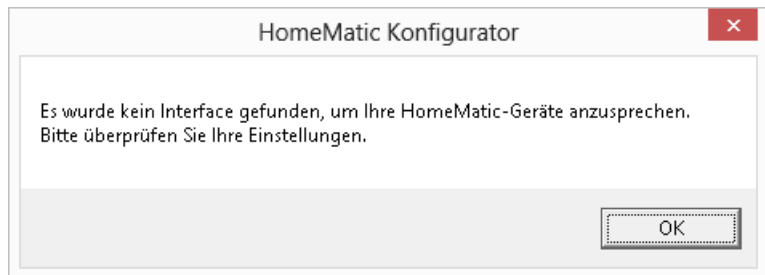
To quickly pair some devices, you can download the User Software of the LAN Configuration Adapter from the eQ-3 Website (<http://www.eq-3.de/software.html>). The zip file contains two setups:

- Setup_BidCos-Service.exe
- and Setup_HMCFG.exe

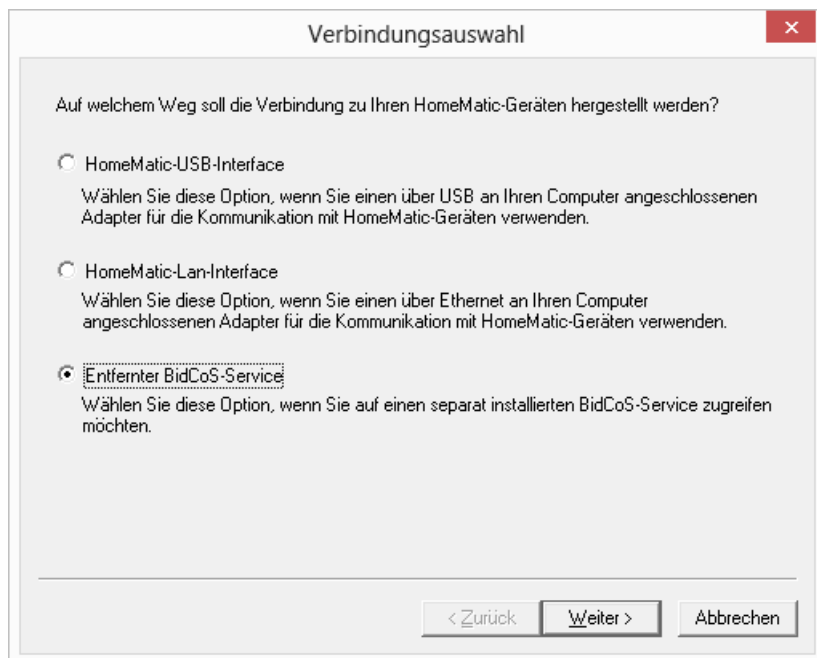
You don't need the BidCoS Service, so just execute Setup_HMCFG.exe.

After the installation is done, start the configurator.

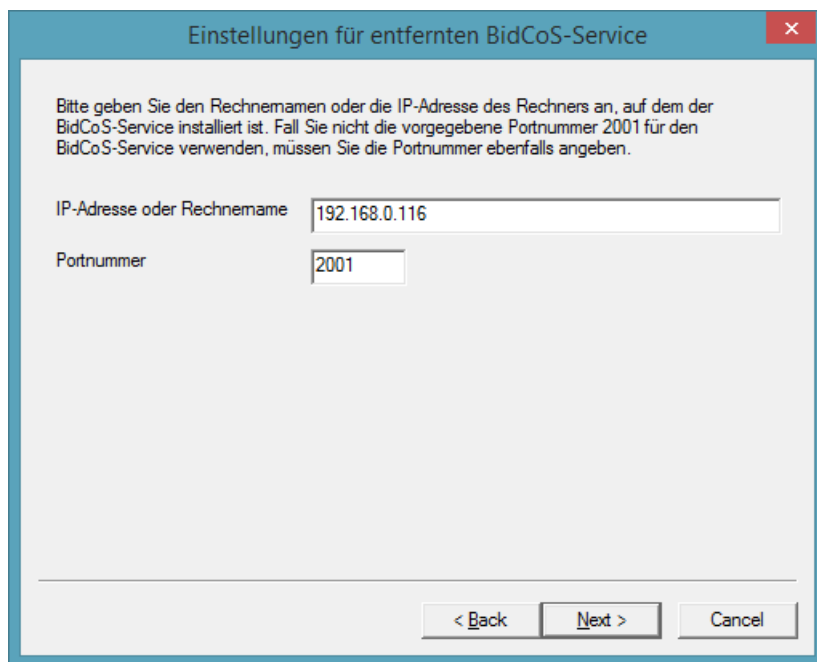
A message will pop up, saying that no interface was found (sorry the screenshots are in German, at the time I'm writing this, there is no English version of the program):



Click on ok and on the next window select "Remote BidCoS Service" and click on "Next":



Enter the ip address or hostname and the port of your Homegear system and click on "Next" again (for me it is localhost, because I'm using a SSH tunnel):



The next window always says, no BidCoS Service was found. Just ignore that and click on "Done".

Now you should be connected to Homegear. If the HomeMatic Configurator doesn't react after being idle for some time, just restart it. That's not because of Homegear!

Click on "Pair Devices" and try to pair one of your devices (don't forget to factory reset it first!). After the pairing process, you should see it in the list:

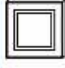
HomeMatic Konfigurator (Keine Rückmeldung)

DateiAnsichtHilfe

HomeMatic Konfigurator

Servicemeldungen (1)

GeräteDirekte GeräteverknüpfungenGeräte anlernenEinstellungen

Name	Typen-Bezeichnung	Bild	Bezeichnung	Serien-nummer	Interface / Kategorie	Übertragungs-modus	Aktion
Filter	Filter		Filter	Filter			
+ 1. OG Flur	HM-LC-Sw1PBU-FM		Funk-Schaltaktor 1-fach für Markenschalter Unterputzmontage	JEQ0098488	VCENTRAL01	Standard	<div>Löschen</div> <div>Einstellen</div>

Filter zurücksetzen

Baumstruktur öffnen

Bereit

Verbunden mit xmlrpc://localhost:2001

Retrieved from "https://www.homegear.eu/index.php?title=Pairing_HomeMatic_BidCoS_Devices&oldid=1500"

- This page was last modified on 25 February 2014, at 23:32.
- This page has been accessed 6,568 times.
- Content is available under Creative Commons Attribution Non-Commercial Share Alike unless otherwise noted.